

KAMESHKOVO

INDUSTRIAL PARK

PRIORITY
DEVELOPMENT
AREA

A PLACE TO INVEST,
WORK AND LIVE

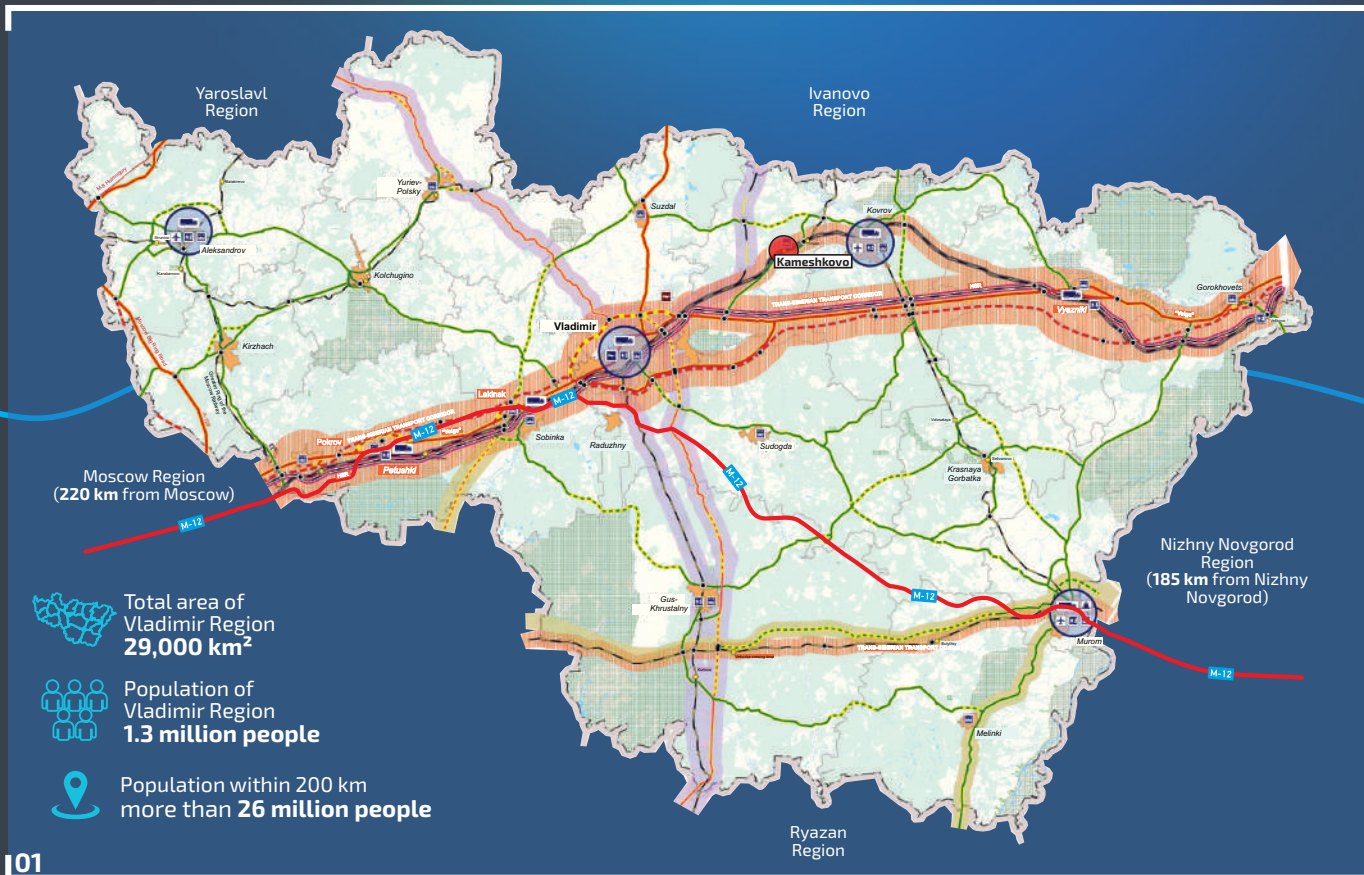


ECONOMY
with meaning



VLADIMIR REGION
ECONOMIC DEVELOPMENT
AGENCY

ADVANTAGEOUS GEOGRAPHY AND LOGISTICS



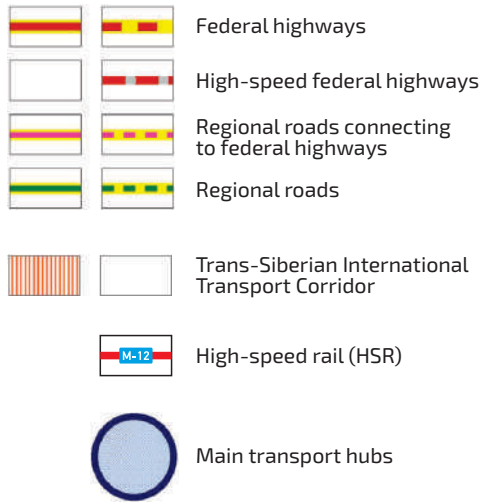
TRANSPORTATION INFRASTRUCTURE

Current | Projected

Railways



Public highways



Due to its central location in Russia's European part, the Vladimir region benefits from excellent geography, logistics and a well-established transportation system.

An arterial thoroughfare stretches from west to east connecting Moscow to Vladimir and further down to Nizhny Novgorod. The Vladimir Region's major roads include Route M7 and M12, a high-speed toll road.

A two- and four-lane road makes up Vladimir's Yuzhny bypass, which is a section of the M12 highway.

The advanced network of public regional and intermunicipal roads provides transport links to all neighboring regions:

the Ryazan region via the Vladimir—Gus-Khrustalny—Tuma road

the Ivanovo and Yaroslavl regions via Vladimir—Yuriev-Polsky—Pereslavl-Zalessky

The travel time from Vladimir to Moscow can be as short as 1 hour and 40 minutes thanks to the dense rail and road networks.

ECONOMIC SECTORS AND INVESTMENT PROJECTS

Businesses in some of the top industries
are located in the area:



Machine and machine-
tool industries



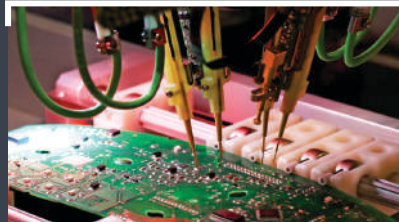
Chemistry and polymer
science



Food production



Glass industry



Electronics & household
appliances



Pharmaceuticals

OVER 40 SUCCESSFUL INVESTMENT PROJECTS

askona
Территория здорового сна

КАБЕЛЬНЫЙ АЛЬЯНС

БайТекс

РУСКИМАТ

FARAL
Кабельный Альянс



FERRERO

Generium

МуроМ

Trimo

METRO

de heus

VESTEL

Гусар
архитектурный
центр

Mondelēz
International

Quarzwurke Gruppe

Hamé

РАКО

veropharm

Nestlé

Abbott

Zoppas Industries
Leading Thermal Technologies

TAKISAWA
TAIWAN

Sudar

Wienerberger

EDöcke
PRODUCT OF GERMANY

DANONE
ONE PLANET. ONE HEALTH

КОМКОП

BOYDAK
INTERNATIONAL

Яндекс

MARCEGAGLIA

ЛЕНТА

СТРАНА КОНТЕЙНЕРОВ

JUTEKS

ДелМорен

США

НПО НАУКА

ИЗТТ
Израильский Институт Технологий и Ученых

СТРАНА КОНТЕЙНЕРОВ

JUTEKS

РУСДЖАМ

BEKO

ВЛАДИМИРСКИЙ
СТАНДАРТ

EAE
ELEKTRIK

globus

СТАРОДВОРЬС

ГЭСЕВСКОЙ
ХРИСТАЛЬНАЯ
ЗАВОД

membranum

ВЕНТРИОНМАШ

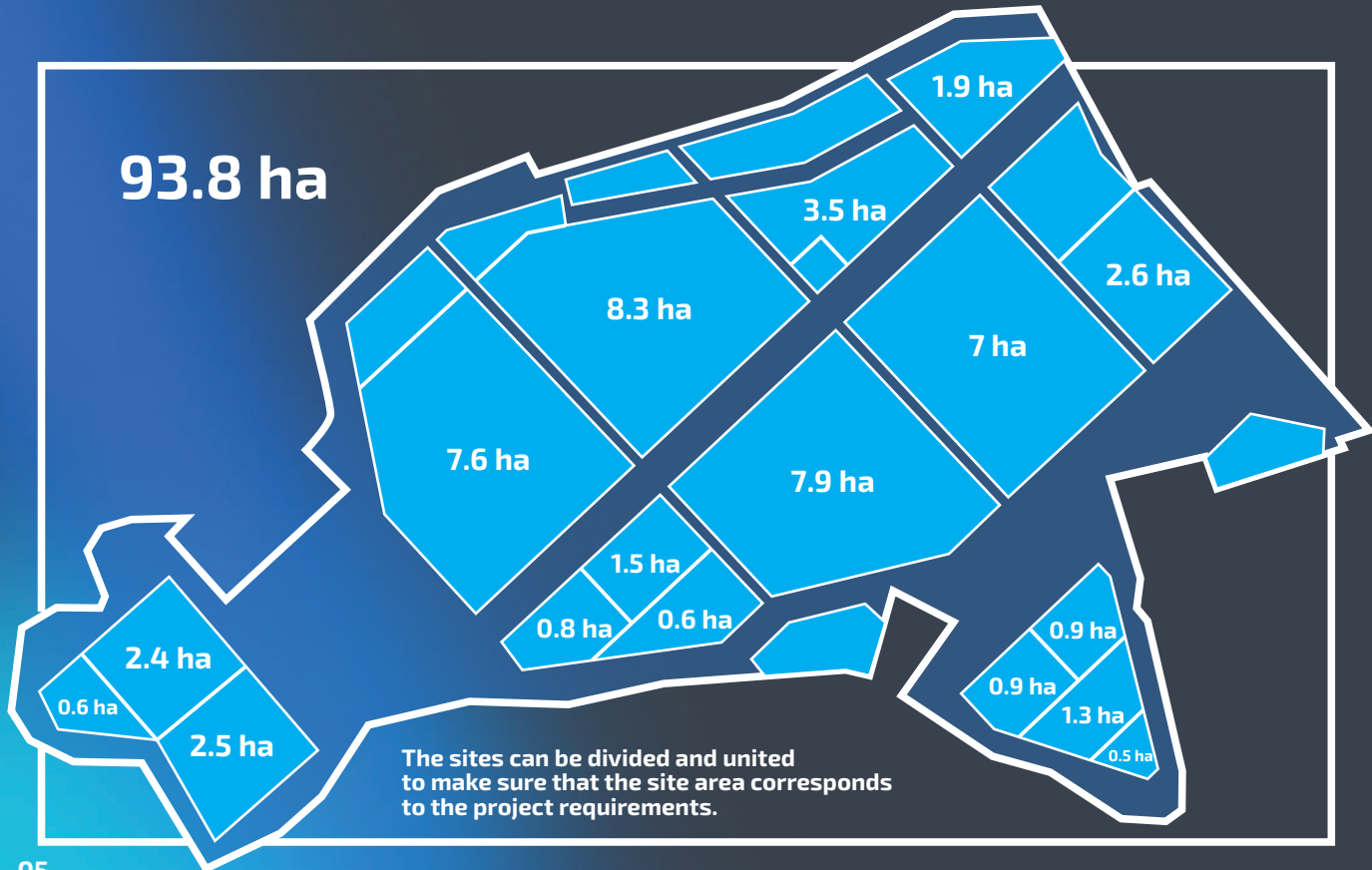
РВД

НПО ВОЯЖ
NPO VOYAGE

Auchan

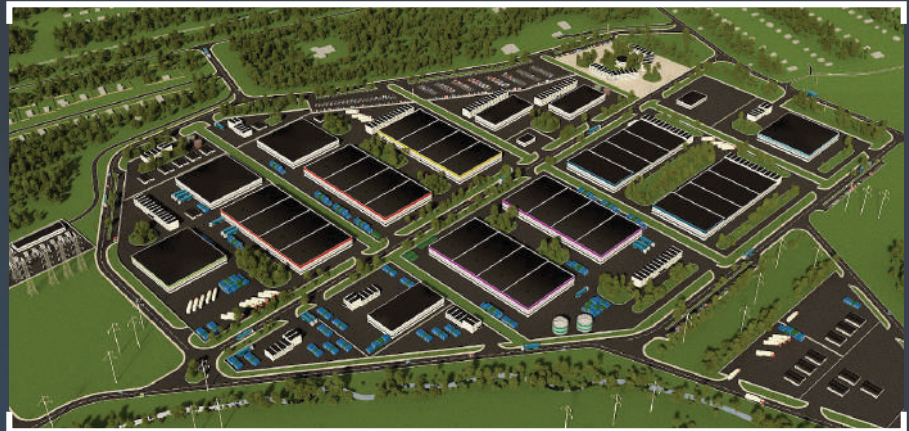
Akrilan

KAMESHKOVO INDUSTRIAL PARK LAYOUT

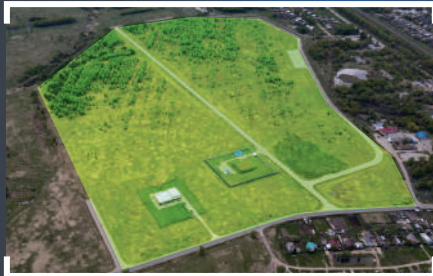


INDUSTRIAL PARK TERRITORY

Kameshkovo Industrial Park is a Russian economic zone with reduced tax rates, simplified administrative procedures and other incentives established to attract investment, spur economic growth, and benefit the community.



Asphalt access to each site



Sites with areas ranging from 0.5 ha to 8.37 ha




Rapid utility hookup



Close proximity to the highway

KAMESHKOVO PDA OFFERS DIVERSE CONDITIONS TO IMPLEMENT YOUR INVESTMENT PROJECTS

Industrial Park Infrastructure

<p>Land type</p>  <p>Greenfield</p>	<p>Available area</p>  <p>36.08 ha</p>	<p>Power supply</p>  <p>15 MW</p>	<p>Water supply starting at RUB 34.54 per cbm</p>  <p>1,070 cbm/day</p>	<p>Water disposal starting at RUB 34.54 per cbm</p>  <p>1,070 cbm/day</p>
<p>Gas supply starting at RUB 5.81 per cbm</p>  <p>8,000 cbm/h</p>	<p>Distance to M7 Highway</p>  <p>23 km</p>	<p>Road</p>  <p>5 km asphalt concrete</p>	<p>Unloading terminal</p>  <p>3 km</p>	<p>Hazard classes</p>  <p>III, IV, V</p>

LAND LEASE PROCEDURE



KAMESHKOVO PDA RESIDENT'S ROADMAP

- 1** Register a legal entity within the jurisdiction of the municipality hosting the PDA
- 2** Submit application documents to the Vladimir Region Administration
- 3** Project review by the Vladimir Region Administration's Expert Committee
- 4** Sign the investment agreement

HUMAN RESOURCES FOR INVESTMENT PROJECTS



Specific talent development in collaboration with specialized educational institutions



Ensuring the largest possible applicant pool



Joint talent recruitment initiative of the Employment Center and the Work of Russia platform



Recruitment analysis, Effective Recruitment Solution

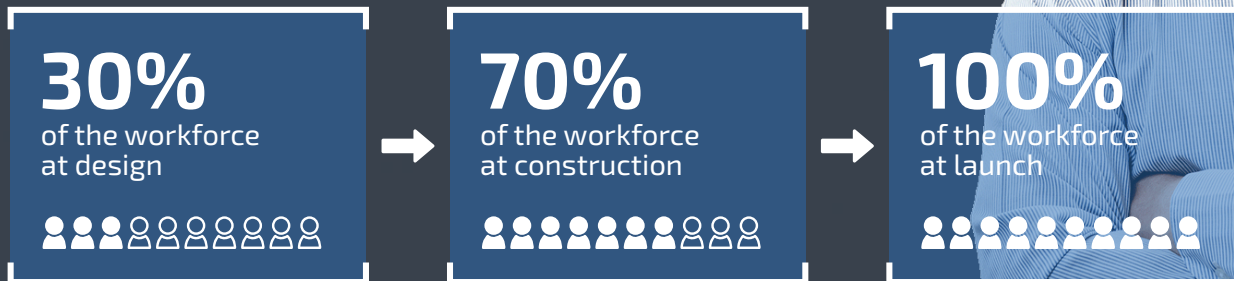


Assistance with external personnel reserve for your enterprise



Identification of educational institutions for retraining to fuel your recruitment success

Stages of assisted project team development



Economic activity types benefiting from special business regulations in the PDA



OKVED 01

Crop and livestock production, hunting and related services in these fields



OKVED 08

Other mining



OKVED 10

Food production



OKVED 14

Production of apparel and accessories



OKVED 15

Production of leather and leather products



OKVED 16

Woodworking and production of wood and cork products, except furniture; production of straw products and weaving materials



OKVED 20

Production of chemicals and chemical products



OKVED 22

Production of rubber and plastic products



OKVED 23

Production of other non-metallic mineral products



OKVED 24

Metallurgy



OKVED 25

Production of metal products, except machinery and equipment



OKVED 26

Production of computers, electronic and optical products



OKVED 27

Production of electrical equipment



OKVED 28

Production of machinery and equipment



OKVED 30

Production of other means of transport and equipment



OKVED 52

Warehousing and auxiliary transport activities



OKVED 86

Healthcare activities

TAX INCENTIVES AND SUPPORT MEASURES FOR RESIDENTS

Make the most of Kameshkovo PDA

Tax/Levy	Rate	Benefit period
Property tax	0%	10 years
Income tax, including	0%	first 5 years
	10%	next 5 years
Land tax	0%	12 years
Mineral extraction tax	Differentiated tax rates have been established	for 120 tax periods since income tax commencement date

KAMESHKOVO PDA: TRANSPARENT AND FAVORABLE CONDITIONS FOR YOUR BUSINESS



Simple resident status obtaining procedure



Government support for investment initiatives



Advantageous geography



Availability of competent workforce



Availability of land for business

STEPS TO PARTNERSHIP

1



Contact us in any way that is most convenient for you

2



Personal project manager from the initial consultation

- Site selection assistance
- Contracts and agreements
- Land lease
- Utility hookup
- Accelerated timeline
- Project support
- HR support

3



Operational support

- Selection of support measures
- Export support
- Assistance with migration
- Regulatory consulting services
- Supplier and contractor selection



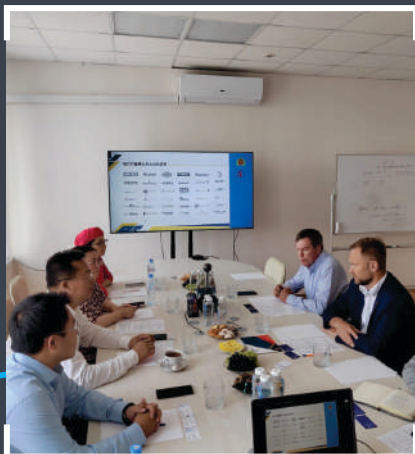
VLADIMIR REGION
ECONOMIC DEVELOPMENT
AGENCY

SINGLE-WINDOW SYSTEM FOR YOUR INVESTMENT PROJECT

- Selection of business platforms
- Selection of support measures
- GR and interaction with public monopolies
- Assistance with utility connections, housing construction, tariff adjustments, transportation-related issues, etc.
- Information and advisory support
- Additional potential for expansion and integration with the global export market

INVESTMENT PROJECT PROMOTION

- Promotion in the Russian and foreign markets
- Integration of your business with a single information field
- New partnerships
- Participation in international visits and business missions
- Participation in expositions, congresses, and forums
- Interaction with the local entrepreneurial community
- United Regional Industrial Club





MINISTRY
OF ECONOMY
AND INDUSTRY



VLADIMIR REGION
ECONOMIC DEVELOPMENT
AGENCY



21 Oktyabrsky prospekt,
600000 Vladimir



8 (4922) 33 18 48



economy@avo.ru



29 Mira St., office 38,
600017 Vladimir



8 (4922) 60 33 19



investvladimir.agency